

HAVE AN ITCHY DOG?

Frequent scratching is one sign of allergic itch, but there are other telltale signs as well:



Frequent licking,
chewing, biting
or scratching



Excessive rolling,
rubbing or
scotching



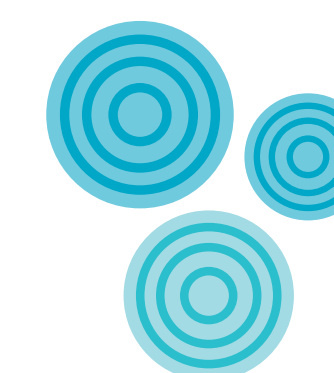
Recurrent ear problems
(head shaking, ear
discharge/odor or
scratching at ears)



Hair loss



Body odor



Skin changes
(rash, redness, greasy
skin or scabs)

The more we know about itch, the better informed we'll be to treat it. Sharing your dog's itch history is critical to uncovering the underlying cause of itch and the proper course of action.

- Where is your dog itchy?
- How itchy is your dog on a scale of 0-100 (0 indicating a normal dog and 100 indicating extremely severe itching)?
- How long and how often has your dog been itchy? Are there certain times of the year your dog is itchy (duration, seasonality, etc)?
- What have you already tried to relieve the itch?
- What are you using for flea control?

ITCH OBSERVATIONS (TO SHARE WITH VETERINARIAN)
