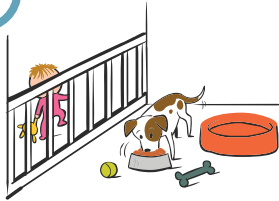
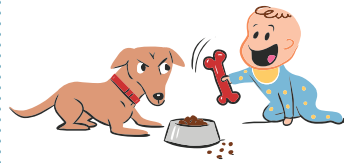


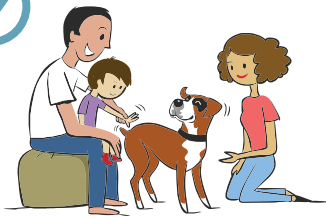
Dog and Toddler Safety



DO use a gate to create a “success station” for your dog



Don't allow access to dog's food, toys or treats



DO plan parent guided games



DON'T allow toddler and dog to play alone at anytime



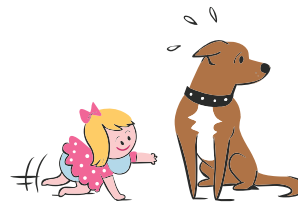
DO be proactive and set up a “success station”



DON'T passively supervise your dog and toddler



DO invite dog over to you and your toddler



DON'T allow toddler to approach your dog



DO put dog in bedroom or crate while parent is away



DON'T expect babysitter to watch both toddler and dog