

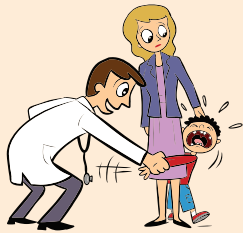
How to Handle Patients in a Caring Manner and What to Avoid

Empathy leads to compassionate care. Imagine how you'd feel if you were treated inconsiderately.

Doctor to Human **INCORRECT**



Avoid examining before greeting.



Avoid insensitive or forceful handling.



Avoid yelling at your patients.

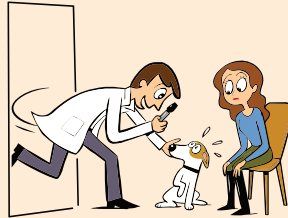


Avoid holding patients down in a forceful manner.

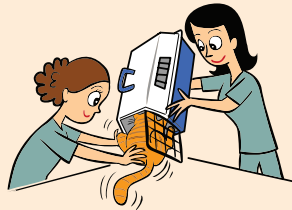


Avoid orienting your patients in a confusing manner.

Veterinarian to Pet **INCORRECT**



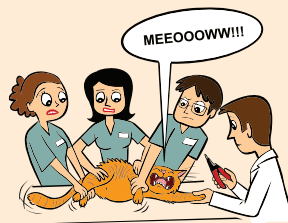
Avoid rushing up to patients and making them nervous.



Avoid dumping or dragging pets out of their crates.



Avoid an angry, commanding voice.

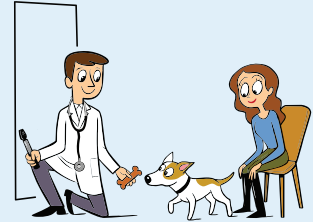


Avoid restraining patients in a way that causes fear or panic.



Avoid positioning pets in a clumsy manner.

Veterinarian to Pet **CORRECT**



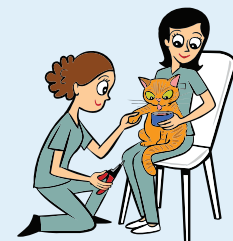
Greet your patients appropriately before you examine them.



Learn more cooperative ways for handling pets.



Handle and communicate in a way that will put your patients at ease.



Learn how to put animals at ease by handling with skill.



Know how to support, guide, and position your patients skillfully.